

# Palace New AB C<sub>fl</sub>-s1

1/8" Eurosaxony bedrukt	1/8" Eurosaxony imprimé	1/8" Saxony bedrukt	1/8" Heat Set Cut Pile printed
100% polyamide IMPREL®	100% polyamide IMPREL®	100% polyamide IMPREL®	100% polyamide IMPREL®
<b>gethermofixeerd</b>	<b>thermofixé</b>	<b>thermofixiert</b>	<b>heatset</b>
<b>RUG</b> Action Back	<b>DOSSIER</b> Action Back	<b>RÜCKEN</b> Textilrücken	<b>BACKING</b> Action Back
<b>POOLHOOGTE</b> ± 9 mm	<b>HAUTEUR DU VELOURS</b> ± 9 mm	<b>POLHÖHE</b> ± 9 mm	<b>PILE HEIGHT</b> ± 9 mm
<b>TOTALE HOOGTE</b> ± 11 mm	<b>HAUTEUR TOTALE</b> ± 11 mm	<b>GESAMTHÖHE</b> ± 11 mm	<b>TOTAL HEIGHT</b> ± 11 mm
<b>POOLGEWICHT</b> ± 900 g/m <sup>2</sup>	<b>POIDS DU VELOURS</b> ± 900 g/m <sup>2</sup>	<b>POLGEWICHT</b> ± 900 g/m <sup>2</sup>	<b>PILE WEIGHT</b> ± 900 g/m <sup>2</sup>
<b>TOTAAL GEWICHT</b> ± 1.940 g/m <sup>2</sup>	<b>POIDS TOTAL</b> ± 1.940 g/m <sup>2</sup>	<b>GESAMTGEWICHT</b> ± 1.940 g/m <sup>2</sup>	<b>TOTAL WEIGHT</b> ± 1.940 g/m <sup>2</sup>
<b>AANTAL NOPPEN/M<sup>2</sup></b> ± 123 500	<b>NOMBRE DE POINTS/M<sup>2</sup></b> ± 123 500	<b>NOPPEN/M<sup>2</sup></b> ± 123 500	<b>TUFT DENSITY/M<sup>2</sup></b> ± 123 500
<b>AANBEVOLEN LEGWIJZE</b> • Spannen	<b>POSE PRÉCONISÉE</b> • Tendre	<b>EMPFOHLENE VERLEGEART</b> • Verspannen	<b>INSTALLATION METHOD</b> • Stretching
<b>GEBRUIK</b> • Klasse 22+ huishoudelijk • Comfort: 3*** • Trappen (wonen) • Brandkl. C <sub>fl</sub> -s1 DIN EN13501-1 • Geschikt v. vloerverwarming	<b>UTILISATION</b> • Classe 22+ domest. général • Confort: 3*** • Escaliers (Habit.) • Classement feu C <sub>fl</sub> -s1 DIN EN13501-1 • Compatible avec sol chauffant • Résistance thermique: ISO 8302: 0.16 m <sup>2</sup> K/W	<b>EINSATZ</b> • Klasse 22+ stark • Komfort: 3*** • Treppengeeignet (W) • Baustoffkl. C <sub>fl</sub> -s1 DIN EN13501-1 • Geeignet f. Fussbodenheizung • Wdw. ISO 8302: 0.16 m <sup>2</sup> K/W	<b>USAGE</b> • Class 22+ heavy domestic • Comfort: 3*** • Stairs domestic • Contract Ration UK: class 4 - heavy, non-domestic use (BCTC 25409/01/04) • Fire resist. C <sub>fl</sub> -s1 DIN EN13501-1 • Suitable f. floorheating
<b>BIJZONDERHEDEN</b> • Vuilafstotend • Soft@home	<b>EXTRAS</b> • Traitement anti-salissure • Soft@home	<b>EXTRAS</b> • Faserschutz gegen Schmutz • Soft@home	<b>EXTRAS</b> • Anti-soil treatment • Soft@home

Onder voorbehoud van wijzigingen van de technische specificaties - Sous réserve de modifications techniques - Unter Vorbehalt von technischen Änderungen - All rights reserved to alter technical specification



Rapp./Racc./Rep.: - Breite/Largeur/Width: 11.5 cm - Höhe/Hauteur/Height: 11.5 cm

Palace	16 merlot	22 alpine	34 hop-sack	38 cham-ois	49 wal-nut	64 russet	77 mid-night	85 auber-gine	97 graph-ite	99 eb-ony
ACTION B. 4M	●	●	●	●	●	●	●	●	●	●
ACTION B. 5M	●	●	●	●	●	●	●	●	●	●

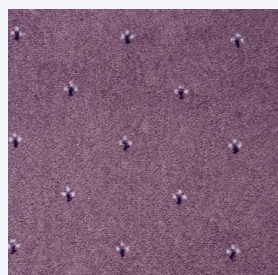
20.05.08



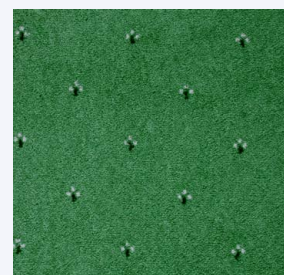
# Palace AB-C<sub>fl</sub>-S1



400+500 cm 38



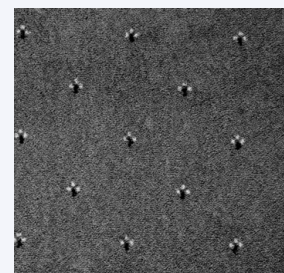
400+500 cm 85



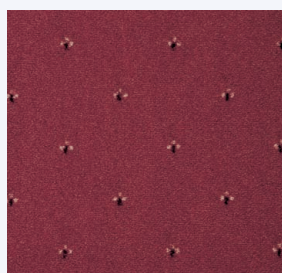
400+500 cm 22



400+500 cm 77



400+500 cm 97



400+500 cm 16



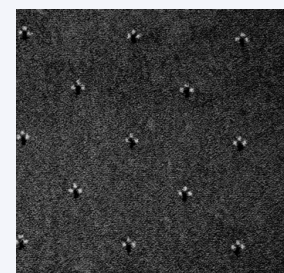
400+500 cm 64



400+500 cm 34



400+500 cm 49



400+500 cm 99

ITC \_ Kanegemstraat 15 \_ 8700 Tielt \_ Belgium  
TEL. +32 51 42 44 11 FAX +32 51 42 44 85  
Email: [itc@baltagroup.com](mailto:itc@baltagroup.com) [www.baltagroup.com](http://www.baltagroup.com)

